

Robust design for intensive use



DLP technology with BrilliantColor™

Barco's latest iD R600+ series design has brought Texas Instruments Dark Metal III S single-chip DLP technology and BrilliantColor™ processing to ultimate perfection.

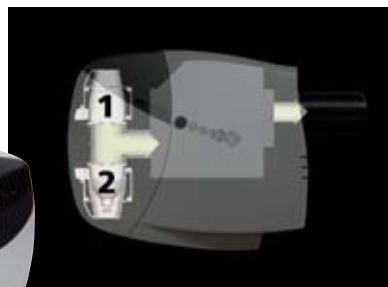
BrilliantColor technology dramatically improves color reproduction. It brings stunning video and true-to-life photographic images by providing more colors, truer colors and a higher light efficiency to the projector.



Innovative dual-lamp system maximizes light efficiency and reliability

The iD R600+ projector series comes with an advanced dual-lamp system, providing guaranteed uninterrupted presentations.

In **dual-lamp mode**, the iD R600+ projectors deliver up to 6,000 ANSI lumens and a 1,500-hour lifetime of the lamp system. If one lamp fails for any reason, the other lamp will keep on running.



For applications where less light output is required, switch to **single-lamp mode** and double the lifetime of the lamp system. If one lamp fails, the innovative auto-sensing feature instantly switches to the other lamp, and you can continue your presentation without going into standby mode.

Furthermore, the iD Pro projector lamps alternate intelligently, in order to reach end-of-life simultaneously. This way you can replace both lamps at the same moment, saving maintenance time.



Lamps take only seconds to replace with our innovative click & plug-in concept. No special tools are required.

Connect to virtually anything

The iD and iD Pro can show up to 2 data and 1 video sources at the same time, while the iD Pro R600+ can also display files from networked sources.



The iD R600+ can be further equipped with one of the following optional input boards:

- **SDI input board:** offers SDI in and out (active SDI loop through)
- **Audio switcher and video input board:** offers an extra video input (composite and S-video) and an audio switcher/mixer (4 stereo line in - 1 stereo line out)

iD R600+
iD Pro R600+



iD R600+ / iD Pro R600+ specifications

Light output

6,000 ANSI lumens in dual lamp mode
Brightness uniformity: > 95 % for the total screen

Display technology

1-chip 0.95" DarkChip3® DLP® SXGA+ panel with BrilliantColor™ processing and a native resolution of 1400 x 1050 pixels, 4:3 aspect ratio

Lamp

2 x 250 Watt UHP lamp, in lamp housing, pre-aligned for max. light output.
Typical lifetime: 1,500 h/lamp.
1,500 hours in Dual Lamp Mode or 3,000 hours in Single Lamp Mode.

Contrast ratio

2,000 : 1 (full white/full black)

Available Lenses

Lens Type	Order No.
High Quality Zoom Lenses	
QCLD (1.1-1.3:1)	R9849850
CLD (1.2-1.6:1)	R9849870
CLD (1.6-2.4:1)	R9849880
CLD (2.4-4.3:1)	R9849890
Fixed Focal Length Lens	
QCLD (0.85:1)	R9849860

Lens shift range

Max. vertical shift from -30% to +110%

Recommended Screen Width

From 1-6 m/3-20 ft.

Scan Frequencies

Horizontal 15 kHz - 110 kHz
Vertical 25 Hz - 150 Hz

Special Features

- AutoIMAGE
- Advanced picture-in-picture
- Seamless switching with effects
- Standard cable basket
- Advanced soft-edge blending

Communication

1x D9 connectors for RS232 In/Out
1x IR remote receiver
On iD Pro R600+ display server:
4x USB
1x RJ45 (Ethernet)
1x PCMCIA slot (Type II)

Ref. n°. R599981 August 2006



Barco Presentation & Simulation is an ISO 9001 registered company. The information and data given are typical for the equipment described. However any individual item is subject to change without any notice. The latest version of this product sheet can be found on www.barco.com/presentation

DLP® technology by Texas Instruments offers crystal clear images with superior quality. DLP®, the DLP logo and BrilliantColor™ are registered trademarks of Texas Instruments

Inputs

1x Component Video, RGBHV, RGBS or RGSB (5x BNC)
1x Composite Video (BNC)
1x S-Video (4-pin mini-DIN)
1x VGA (D15 connector)
1x DVI (Digital Visual Interface)
1x SDI optional (for iD R600+ only)
Audio connections on iD Pro R600+ only:
1x Stereo mic in
1x Stereo line in
1x Stereo line out

Compatibility

The iD R600+ series is compatible with:

- All current video sources (PAL, SECAM, NTSC) in Composite, S-VHS, Component or RGB formats
- All currently proposed HDTV, extended and improved television standards (1080i, 720p)
- Most sources with a pixel clock up to 160 MHz
- All computer graphics formats from VGA, S-VGA, XGA, S-XGA and U-XGA (75 Hz)
- Apple Macintosh formats
- Electronic workstations with a resolution up to 1600 x 1200 pixels/75 Hz
- DVI sources up to SXGA+

Integrated server platform

(on iD Pro R600+ only)

- Pentium M 1.6 GHz processor
- 512 MB RAM
- 40 GB Hard Disk (5,400 rpm)
- Microsoft™ XP Pro Multi-language OS installed
- Barco server software for network communication between iQ PRO server and clients
- DropZone
- Proximity Desktop Client

Max. power consumption

iD R600+: 650 Watt
iD Pro R600+: 680 Watt

AC Power

Power factor pre-regulated SMPS,
90-254 VAC / 50-60Hz

Safety Regulations

Compliant with UL1950 and EN60950

Electromagnetic Interference

BARCO's iD Series comply with FCC rules & regulations, part 15
Class B, CE EN55022 Class A and CCC

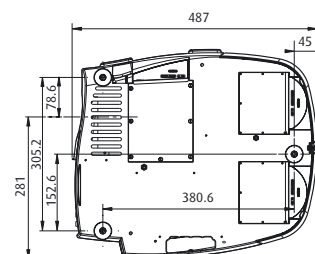
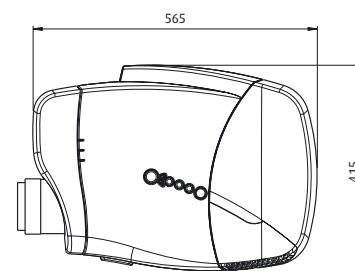
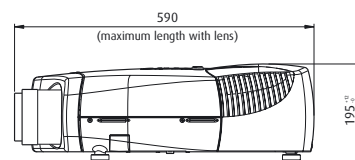
Weight

iD R600+:

Net weight, body only: 12.9 kg / 28.5 lbs.
Shipping weight: max.17.5 kg / 38.5 lbs.

iD Pro R600+:

Net weight, body only: 13.5 kg / 29.8 lbs.
Shipping weight: max.18.1 kg / 39.8 lbs.
(shipping weight is without lens)



Dimensions	mm	inch
Length ⁽¹⁾	590	23.23
Width	415	16.34
Height	195	7.68

(1) max. size including lens

Order information

iD R600+ R9010341
iD Pro R600+ R9010351
Lamp UHP 250 Watt R9841822
Dual lamp package R9841823

Optional input boards *(iD R600+ only):*

SDI input kit R9843120
Audio switching & video input board R9843130

Barco Presentation

Noordlaan 5, B-8520 Kuurne - Belgium
Tel. +32 56 36 82 11 - Fax +32 56 36 85 26
email: info.presentation@barco.com

3059 Premiere Parkway
Duluth, GA 30097-4905
Tel. +1 678 475 8000 - Fax +1 678 475 8100
email: BPSmarketing@barco.com

BARCO

Visibly yours

iD R600+ / iD Pro R600+



1-chip DLP projector with BrilliantColor™ for intensive use applications



- 6,000 ANSI lumens
- 2,000:1 contrast ratio
- SXGA+ resolution (1400 x 1050 pixels)
- BrilliantColor™ processing for more accurate and vibrant colors
- Advanced picture-in-picture
- Seamless source switching for smooth presentations
- Built-in server (iD Pro R600+) for network centric visualization

BARCO

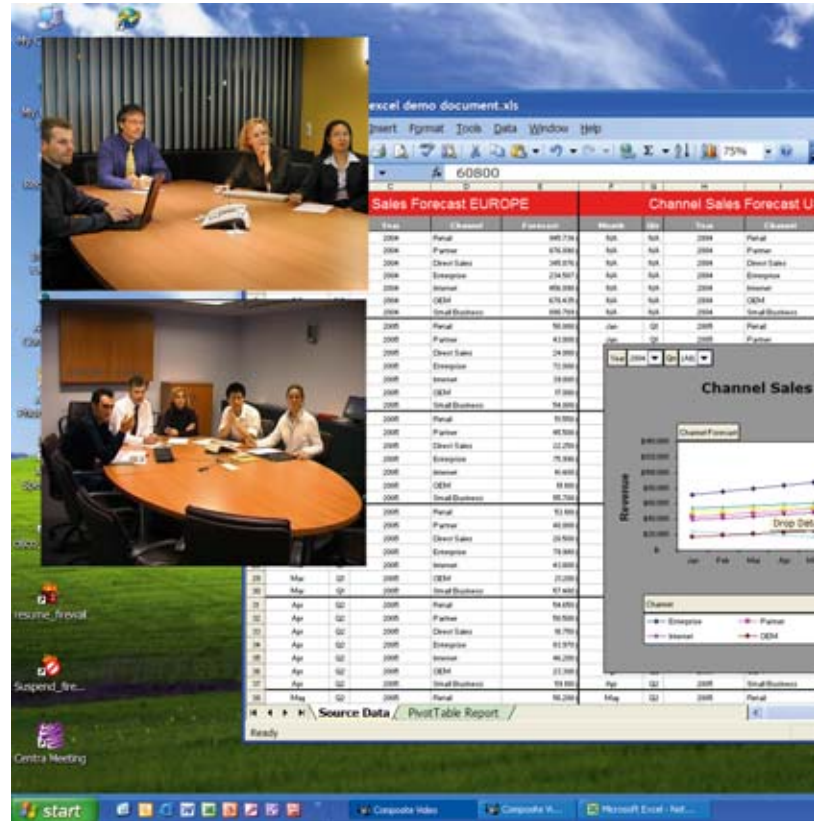
Visibly yours

iD R600+: Captivating presentations

The dedicated design for intensive use applications turns the iD R600+ into the perfect solution for use in lobbies, customer centers, museums, theme parks, casinos and entertainment floors.

Advanced picture-in-picture functionalities and seamless source switching make it the product of choice for captivating presentations, while the network centric iD Pro R600+ with built-in server gives direct access to all networked information for efficient meetings, even at multi-site locations.

Unique multi-screen technology allows for impressive panoramic visual impact as needed in exhibition halls, casinos and large venues.



Display multiple sources simultaneously

Efficient decision making means exchanging and retrieving information in a fast and efficient way. The advanced picture-in-picture functionality of the iD series allows to display up to 3 source windows

simultaneously, so data can be compared easily and even be complemented with video. You can freely position and scale source windows for optimal impact. The iD R600+ projector allows to digitally zoom inside a source window and scroll for the details you want to emphasize.



Seamless source switching

Switch sources on-the-fly without distracting on-screen warning messages or irritating intervals. Go from a video to a data image in a snap, or use the special effects.

Companies, museums and conference centers create a strong company identity on continuous display many hours a day, using the Barco iD R600+.



iD Pro R600+: Efficient meetings

Network centric projection No need for a laptop

The iD Pro 600+ features a built-in powerful display server that can be easily connected to the user's network. There is no need to bring your laptop to the meeting; you can send any file in any format over the network to the projector.

Barco's proximity desktop allows streaming your desktop over LAN to the projection screen. Also the corporate video can be streamed straight from the network, no need for extra video equipment. Frequently used presentations and corporate movies can be saved on the projector's integrated server for fast retrieval.

Easy to use familiar Windows™ XP Pro user interface

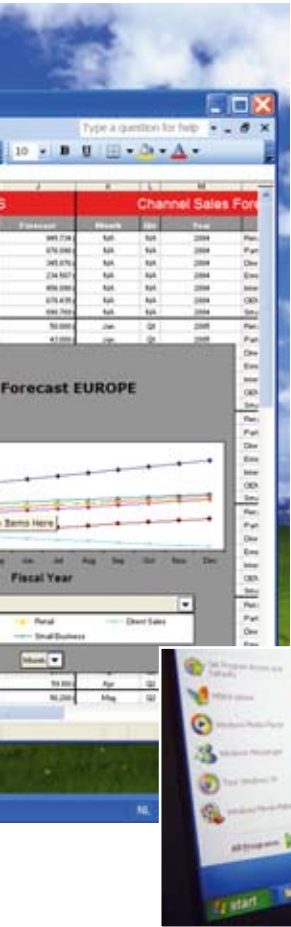
Use mouse and keyboard to freely position and scale multiple window frames, change the aspect ratios, the brightness, color, and contrast levels, simply using a mouse and keyboard, eliminating the need for the traditional remote control.

Multi-site meetings improve business efficiency

Meetings in multiple sites can be visually linked, sharing the same content on a large screen. Files can be transferred to the projector in the meeting room from any networked location. From any networked location a presenter can take control of the presentation and the projector to do his part of the presentation or to interact with the content on display. Easy interaction by all participants leads to fast and accurate decision making.

Instant help from central AV/IT when needed

The AV facility manager can remotely control and manage a fleet of projectors from one location. If a presenter needs help setting up a projector, it is no longer necessary to run to the meeting room to give assistance. The AV facility manager can assist the presenter without leaving his office.



Multi-windowing at Actis, London

LAN/WAN



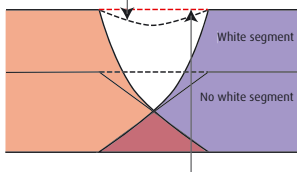
From his desk, the AV Facility Manager can define the content and layout of the projected images throughout the building. He can select the parameters he wants for email alerts, and will be able to easily monitor the critical parameters of the projectors.

Impressive panoramatic impact



Efficient seamless blending

Extra use of the white segment in the DLP® color wheel improves brightness, but introduces white peaking in the overlap zones, making blends visible.



Barco's unique gamma compensation maintains excellent blending at high brightness levels. Optical Soft-Edge Blending is in no way influenced by white peaking.



Multi-channel visualization without proper blending and color uniformity adjustment

Multi-screen color uniformity

Linked DYNACOLOR™ automatically aligns the projector to a common color triangle. This ensures that all projectors in the entire system have exactly the same primary and secondary color coordinates. The system auto-senses the addition of a new projector to a system and updates the common color triangle as required.

Brussels Casino, Belgium



American Museum of National History, N.Y., USA

Large exhibition halls, auditoriums, entertainment floors, casinos and museums create a strong visual impact, thanks to Barco's advanced built-in multi-screen features.

