

## iD (Pro) R600



### The smartest and brightest single-chip DLP projector



The iD (Pro) R600 visualization solution is the right fit for extensive displaying applications offering advanced picture-in-picture, SXGA+ and networking functionality.

**BARCO**

Visibly yours

# Based on a robust technology

## Intensive use

- Robust single chip DLP™ technology
- Dual lamp redundancy

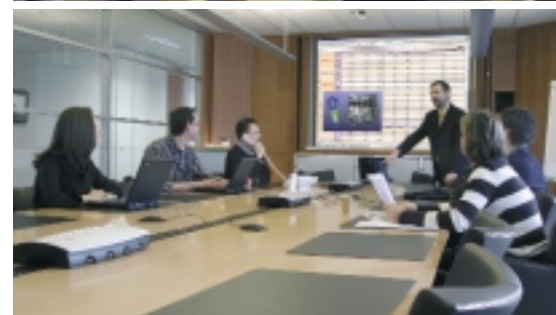
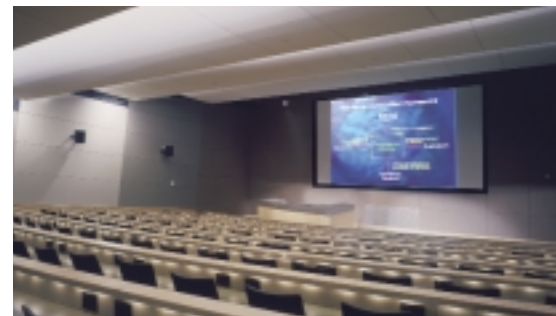
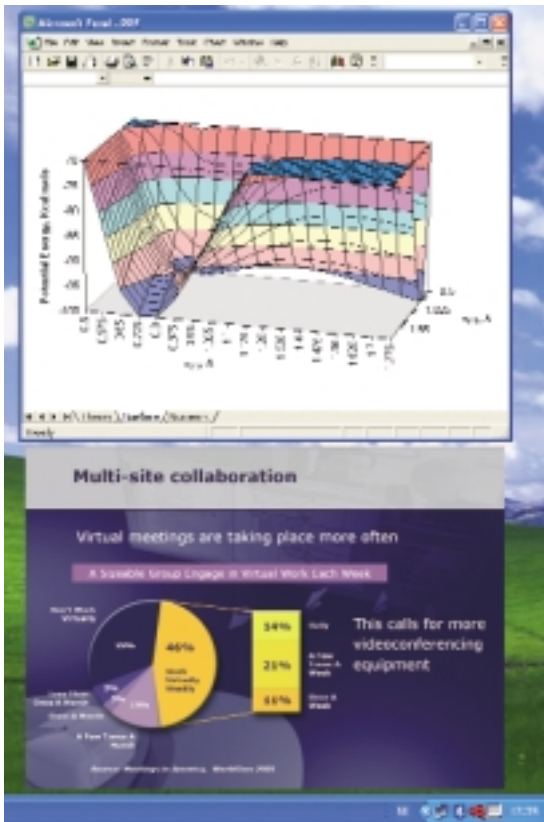
## Lower operation and maintenance costs

- Less consumables thanks to DLP technology
- Network centric operation
- Remote control & diagnostics

## Increased visualization efficiency

- SXGA+ resolution for superb detail
- Picture-in-Picture
- High brightness

High brightness and high resolution, combined with the robustness of a DLP solution, turn the iD R600 into the perfect solution for intensive use applications in bright environments such as hotels, museums, corporate imaging applications, boardrooms, conference centers, casinos, ...



## Barco iD (Pro) R600



# The ultimate presentation machine



*In the lobby, companies, museums and conference centers create a strong company identity*

**Catch your audiences attention with overwhelming flexibility**

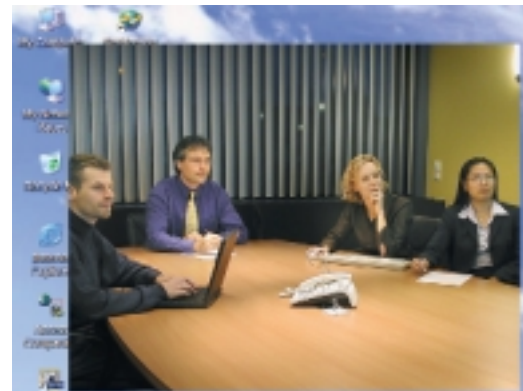
The advanced picture-in-picture functionality for displaying multiple sources, both video and data, ensures the flexibility to show multiple windows next to one another.

**Make a lasting impression**

This 6,000 ANSI lumen DLP projector generates a bright, true color, high-resolution video image on a 4:3 canvas, with a contrast ratio of more than 1500:1, resulting in the projection of high quality video and data images.

**DLP by the technology leader**

Delivers bright pictures in normal light conditions

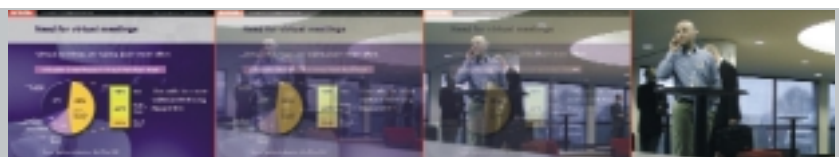


**Connect to virtually anything**

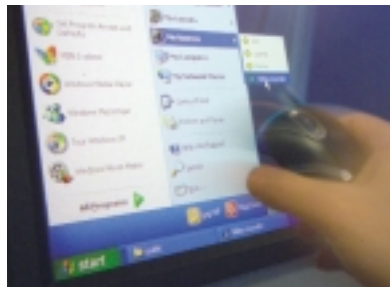
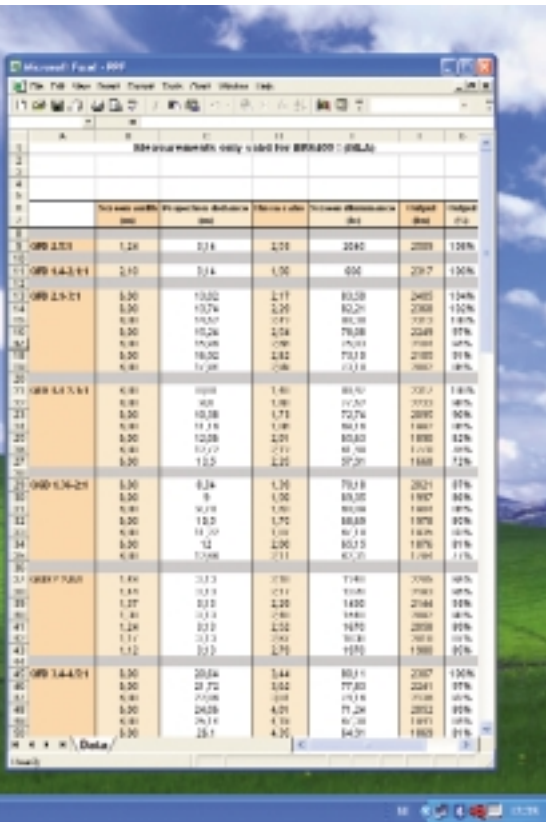
The iD (Pro) R600 can show up to 2 data and 1 video sources at the same time, without optional input boards. With iD Pro R600, you can connect to your network sources and stream video from the network or connect over LAN to your PC.

**Seamless source switching**

Switch sources on-the-fly without distracting on-screen warning messages or irritating intervals. Go from a video to a data image in a snap, or use the special effects.



# The power of network connectivity



## Windows™ XP platform: the familiar user interface\*

Via mouse and keyboard and the familiar Windows XP user interface, the presenter can easily connect to the network to retrieve files, stream video or share information with other users. The same mouse and keyboard are used to operate the system and to move your windows, or to connect to your sources.

The graphical user interface enables users to freely position and scale multiple window frames, change the aspect ratios, the brightness, color, and contrast levels, simply using the mouse and keyboard, eliminating the need of the traditional remote control.

(\* available on iD Pro R600

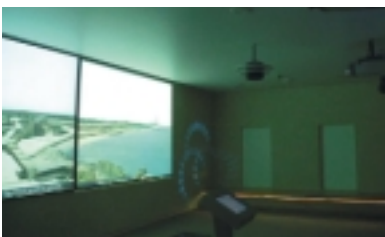
## Surprise meeting participants with shared multi-site multi-windowing

The iD Pro R600, equipped with a powerful display server, can be easily connected to the user's network infrastructure. Linking several of these iD Pro's to the network brings multi-windowing to multi-site meetings, with the ability to perform real-time interaction and file sharing. By eliminating the need for travel and accelerating the decision making process, business will happen more efficient and productivity will increase, resulting in a higher return on investment.

## Easily control your PC via the projector's mouse

Barco's Proximity Desktop allows to stream your desktop over LAN to the projection screen and fully control your PC from there.

- iD Pro R600 increases business efficiency in the corporate market.*
- virtual meetings save expensive travelling time
  - retrieve any file from the network
  - freely position and scale source windows



Large exhibition halls, auditoriums, entertainment floors, casinos and museums create a strong visual impact for their programs on show.



# Tailor-made multi-screen solution



Choose for a lower cost, without sacrificing quality.

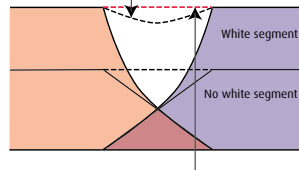
If your application specifically needs a multi-screen setup, Barco can offer you tailor-made solutions that are far more cost-competitive.



*Multi-channel visualization without proper blending and color uniformity adjustment*

## Efficient seamless blending

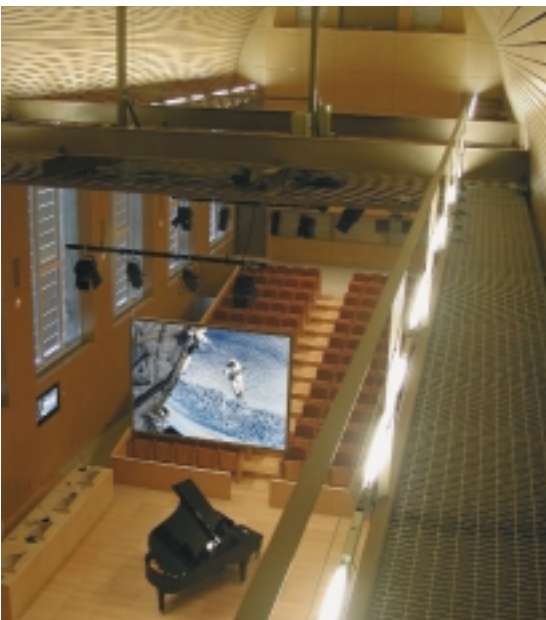
Extra use of the white segment in the DLP™ color wheel improves brightness, but introduces white peaking in the overlap zones, making blends visible.



Barco's unique gamma compensation maintains excellent blending at high brightness levels. Optical Soft-Edge Blending is in no way influenced by white peaking.

## Multi-screen color uniformity

Linked DYNACOLOR™ automatically aligns the projector to a common color triangle. This ensures that all projectors in the entire system have exactly the same primary and secondary color coordinates. The system auto-senses the addition of a new projector to a system and updates the common color triangle as required.



# iD (Pro) R600 specifications

## Light output

6,000 ANSI lumens in dual lamp mode  
Brightness uniformity: > 95 % for the total screen

## Display technology

1-chip 0.95" DarkChip3™ DLP™ SXGA+ panel, with a native resolution of 1400 x 1050 pixels, 4:3 aspect ratio

## Lamp

2 x 250 Watt UHP lamp, in lamp housing, pre-aligned for max. light output.  
Typical lifetime: 1,500 h/lamp.  
1,500 hours in Dual Lamp Mode or 3,000 hours in Single Lamp Mode.

## Contrast ratio

2,000 : 1 (full white/full black)

## Available Lenses

Lens Type	Order No.
High Quality Zoom Lenses	
QCLD (1.1-1.3:1)	R9849850
CLD (1.2-1.6:1)	R9849870
CLD (1.6-2.4:1)	R9849880
CLD (2.4-4.3:1)	R9849890
Fixed Focal Length Lens	
QCLD (0.8:1)	R9849860

## Lens shift range

Max. vertical shift from -30% to +110%

## Recommended Screen Width

From 1-6 m/3-20 ft.

## Scan Frequencies

Horizontal 15 kHz - 110 kHz  
Vertical 25 Hz - 150 Hz

## Special Features

- AUTOIMAGE
- Advanced picture-in-picture
- Seamless switching with effects
- Standard cable basket

## Communication

1x D9 connectors for RS232 In/Out  
1x spherical IR receiver  
*On iD Pro R600 display server:*  
4x USB  
1x RJ45 (Ethernet)  
1x PCMCIA slot (Type II)

## Inputs

1x Component Video, RGBHV, RGBS or RGSB (5x BNC)  
1x Composite Video (BNC)  
1x S-Video (4-pin mini-DIN)  
1x VGA (D15 connector)  
1x DVI (Digital Visual Interface)  
1x SDI optional (for iD R600 only)  
*Audio connections on iD Pro R600 only:*  
1x Stereo mic in  
1x Stereo line in  
1x Stereo line out

## Compatibility

The iD (Pro) R600 is compatible with:

- All current video sources (PAL, SECAM, NTSC) in Composite, S-VHS, Component or RGB formats
- All currently proposed HDTV, extended and improved television standards (1080i, 720p)
- Most sources with a pixel clock up to 160 MHz
- All computer graphics formats from VGA, S-VGA, XGA, S-XGA and U-XGA (75 Hz)
- Most Macintosh computers
- Electronic workstations with a resolution up to 1600 x 1200 pixels/75 Hz
- DVI sources up to SXGA+

## Integrated server platform

*(on iD Pro R600 only)*

- Pentium M 1.6 GHz processor
- 512 MB RAM
- 40 GB Hard Disk (5400 rpm)
- Microsoft™ XP Multi-language OS installed
- Barco server software for network communication between iQ Pro server and clients

## Max. power consumption

Barco iD R600: 650 Watt  
Barco iD Pro R600: 680 Watt

## AC Power

Power factor pre-regulated SMPS,  
90-254 VAC / 50-60Hz

## Safety Regulations

Compliant with UL1950 and EN60950

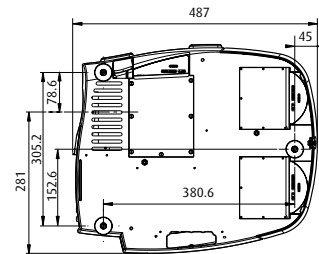
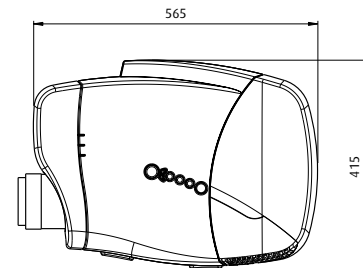
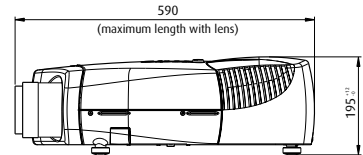
## Electromagnetic Interference

BARCO's iD Series comply with FCC rules & regulations, part 15  
Class B, CE EN55022 Class B and CCC

## Weight

Barco iD R600:  
Net weight, body only: 12.9 kg / 28.5 lbs.  
Shipping weight: max.17.5 kg / 38.5 lbs.

Barco iD Pro R600:  
Net weight, body only: 13.5 kg / 29.8 lbs.  
Shipping weight: max.18.1 kg / 39.8 lbs.  
(shipping weight is without lens)



Dimensions	mm	inch
Length <sup>(1)</sup>	590	23.23
Width	415	16.34
Height	195	7.68

(1) max. size including lens

## Order information

iD R600	R9010340
iD Pro R600	R9010350
Lamp UHP 250 Watt	R9841822
Dual lamp package	R9841823

Optional boards (only for iD R600):

SDI input board	R9843120
Audio switching & video input board	R9843130

Ref. n°. R599981 November 2005



Barco Presentation is an ISO 9001 registered company.  
The information and data given are typical for the equipment described. However any individual item is subject to change without any notice.  
The latest version of this product sheet can be found on [www.presentation.barco.com](http://www.presentation.barco.com)

DLP™ technology by Texas Instruments offers crystal clear images with superior quality.  
DLP is a trademark of Texas Instruments.

Barco Presentation  
Noordlaan5, B8520 Kuurne - Belgium  
Fax +32 56 36 86 51  
email: [info.presentation@barco.com](mailto:info.presentation@barco.com)

3240 Town Point Drive  
Kennesaw, GA 30144  
Tel. +1 770 218 3200 - Fax +1 770 218 3250  
email: [BPSmarketing@barco.com](mailto:BPSmarketing@barco.com)

**BARCO**

Visibly yours