

Preliminary

Orchestrating a brighter world

NEC

Entry-Level Professional Installation Projectors

P Series

P474W | P474U | P554W | P554U



Versatile installation projectors with features that allow for challenging projection applications on a budget.

Integrated and Powerful

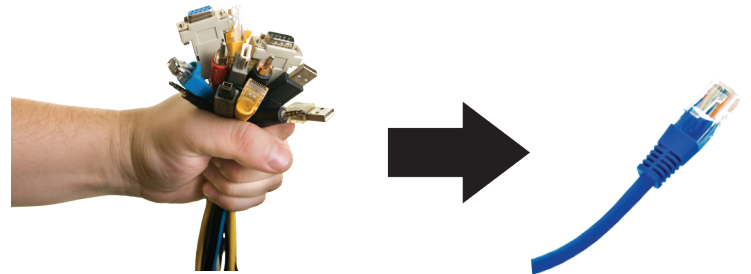
- Project uncompressed FHD video with integrated HDBaseT
- High performance video processing/scaling creates life-like images
- Integrated software applications such as Crestron Roomview, AMX Beacon and PJ Link allow for complete interactivity and control

Flexible

- Horizontal & vertical keystone adjustment along with cornerstone and pincushion provides the ability to square the image to the screen
- Lens shift capabilities make alignment easy: (0-55% vertical / +/-15% horizontal)

Built-In HDBaseT Support

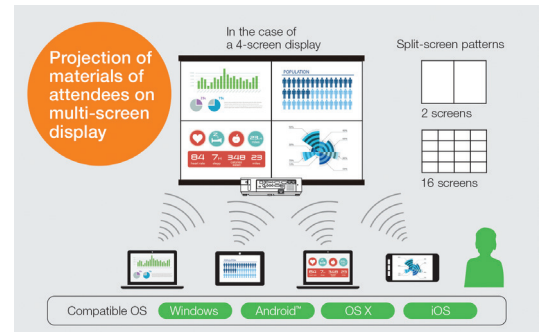
Simplify your installations with HDBaseT. Optimized for video applications and supporting uncompressed full HD digital video, and audio. With only a single cable (up to 100m) to run, infrastructure and labor costs are reduced, installations are significantly easier, and there is no cable clutter to manage. With uncompressed HD video support, images have never been more stunning.



P Series Features

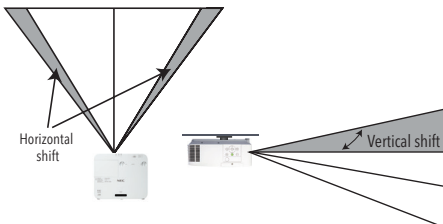
MultiPresenter

Utilization of the optional MultiPresenter Stick provides those looking for a network connection easy connection with up to 12 devices at once. (Win, MAC, Android, iOS) Screen mirroring for Android and Win. Simple annotation software.



Lens Shift

Lens shift provides greater flexibility when determining install location



Digital inputs

Among the P Series' wide selection of inputs are HDBaseT and 2 HDMI w/ HDCP for connecting to high-definition sources such as Blu-ray players, cable boxes, satellite receivers and personal computers.



Variable audio-out

This input enables the remote control to be used to adjust volume of self powered external speakers that are connected to the projector. In stand-by mode, the audio-out stays active, allowing the last input used to pass to the self-powered external speakers.



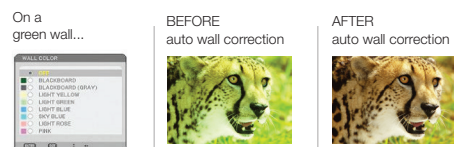
Top cover lamp change

This feature provides for easy lamp changes without removal of the projector from the mount.



Wall color correction presets

These provide for adaptive color tone correction to display properly on non-white surfaces.



Input panel cover

This optional accessory creates a clean look for your installation, while hiding signal cables and the power cord.



Cornerstone™

Enhanced keystone correction allows for horizontal, vertical and diagonal image correction for aligned images even when the projector is set up at an angle to the screen.



Keystone

Horizontal and vertical adjustments to square images to the screen when tilting the projector.



Pincushion

Removes the barreling effect at the edge of the image produced by the screen.



UNIQUE FEATURES

Advanced AccuBlend™ ensures detailed images when non-native resolution sources are connected to the projector

AutoSense™ automatically syncs with any computer signal and features one-touch image optimization

64-step image magnification with location control

Discreet source keys for source selection

Remote diagnostics enable the user to monitor and make adjustments to the projector remotely

Built-in HTTP page for control and monitoring over a LAN network. Email notification of error messages or lamp end-of-life can be sent to remote locations.

WARRANTY

Registered owners receive a 3-year parts and labor warranty including the first year of InstaCare. The lamp is covered for one year or 1000 hours, whichever comes first. InstaCare provides the original owner one year of either limited 3 business day repair/ return or next business day exchange.

SHIPS WITH

Remote control, batteries, RGB signal cable power cord, lens cap, user's manual on CD-ROM, quick start guide, security sticker, product registration card.

ACCESSORIES

- SCP200** Suspended ceiling plate
- MP300CM** Ceiling mount
- NP05LM1** Wireless LAN Module
- RMT-PJ38** Replacement remote control
- PWRCRD-VT70** Power cable
- RGBCBL-PJPX** RGB cable
- NP44LP** Replacement Lamp
- NP12CV** Terminal Cover
- NECEW1-I** Extends term of parts and labor warranty to 4 years
- NECEW2-I** Extends term of parts and labor warranty to 5 years
- ADVEXON1-I** Extends term of InstaCare service program to 2 years
- ADVEXON2-I** Extends term of InstaCare service program to 3 year
- DNSL** DisplayNote Site License

ORDERING MODEL NUMBERS

- NP-P474W** **NP-P474U**
- NP-P554W** **NP-P554U**

		P474W	P554W	P474U	P554U
Display Technology		0.64" LCD			
Light Output (lumens)		4700 normal	5500 normal	4700 normal	5500 normal
Resolution	Native	WXGA 1280 x 800		WUXGA 1920 x 1200	
	Maximum	Up to WUXGA (1920x1200) with Advanced AccuBlend			
Contrast Ratio (up to)		18,000:1 with auto iris	20,000:1 with auto iris	10,000:1 with auto iris	15,000:1 with auto iris
Lamp Life (up to)		4000 hours normal / 8000 hours eco			
Screen Size (diagonal)		30 to 300 in. / 0.8 to 12.9m			
Throw Ratio		1.2 - 2.1:1		1.2 - 2.0:1	
Projection Distance		2.6 to 47.6 ft. / 0.8 to 14.5m			
Projection Angle		12.6 to 12.9° tele / 21.0 to 21.9° wide			
Lens	Zoom	Manual			
	Zoom Ratio	1.6x			
	Focus	Manual			
	F-number, f-number	F= 1.7 to 2.2 f= 17.4 to 29.0 mm		F=1.50 to 2.08, f=17.2 to 27.7mm	
	Shift	Manual (V=0-55% / H=±15%)			
Keystone Correction		+/- 30° vertical, +/- 20° horizontal			
Synchronization Range	Horizontal	Analog: 24-100kHz, Digital: 15-100kHz			
	Vertical	Analog: 50-120Hz, Digital: 50-120Hz			
Supported Video Standards		NTSC, NTSC4.43, PAL, PAL-60, PAL-M, PAL-N, SECAM			
SD/HD Video Signal Compatibility		1080p, 1080i, 720p, 576p, 576i, 480p, 480i			
PC Signal Compatibility		VGA, SVGA, XGA, SXGA, SXGA+, UXGA, WUXGA			
Macintosh Compatibility		Yes			
Input Terminals	RGB1 (analog)	VGA 15 pin D-sub, Component video using ADP-CV1E adapter			
	RGB2 (digital)	HDMI w/HDCP			
	RGB3 (digital)	HDMI w/HDCP			
	RGB4 (digital)	HDBaseT			
	Video	RCA			
	Audio1	L/R RCA (shared by video source)			
	Audio2	Stereo Mini Jack			
	USB Type A	USB for Wireless LAN Adapter & Memory			
Output Terminals	USB Type B	USB Service			
	Monitor Out	VGA 15 pin D-sub			
Audio Out		Stereo Mini Jack (variable audio out)			
Wired LAN port		RJ45 (10 BASE-T / 100 BASE-TX)			
External Control		RS-232, IR, RJ45, DDC/CI			
Speaker		20W (mono)			
Power Requirements		100 – 240V AC, 50/60Hz			
Input Current		1.8A - 4.7A	1.9A - 5.0A	1.9A - 4.7A	2.0A - 5.0A
Power Consumption (ECO off/ECO Mode/Standby/Standby-Power Saving)		418W / 280W / 2.0W / 0.16W	448W / 280W / 2.0W / 0.16W	424W / 286W / 2.0W / 0.14W	457W / 286W / 2.0W / 0.14W
Installation Orientation		Floor/Front, Floor/Rear, Ceiling/Front, Ceiling/Rear			
Dimensions (WxDxH)		16.5 x 13.0 x 5.6 in. / 420 x 329 x 141 mm			
Net Weight		10.6 lbs. / 4.8 kg			
Fan Noise		37 dB normal / 34 dB eco			
Regulations		USA: UL(UL60950-1, FCC Part15 Class B, Canada: CUL(UL60950-1, CES-003 Class B			
Operating Temperature		41° – 104°F / 5° – 40°C			
Humidity		20-80% non-condensing			
Storage		-14° – 122°F / -10° – 50°C			

Additional accessories are available, including screens, carts, mount accessories and replacement cables. Visit www.necdisplay.com for details.



3D Reform, Advanced AccuBlend, AutoSense and ECO Mode are trademarks of NEC Display Solutions. HDBaseT™ and the HDBaseT Alliance logo are trademarks of the HDBaseT Alliance. The terms HDMI and HDMI High-Definition Multimedia Interface, and the HDMI Logo are trademarks or registered trademarks of HDMI Licensing Administrator, Inc. in the United States and other countries. All other brand or product names are trademarks or registered trademarks of their respective holders. Product specifications subject to change.