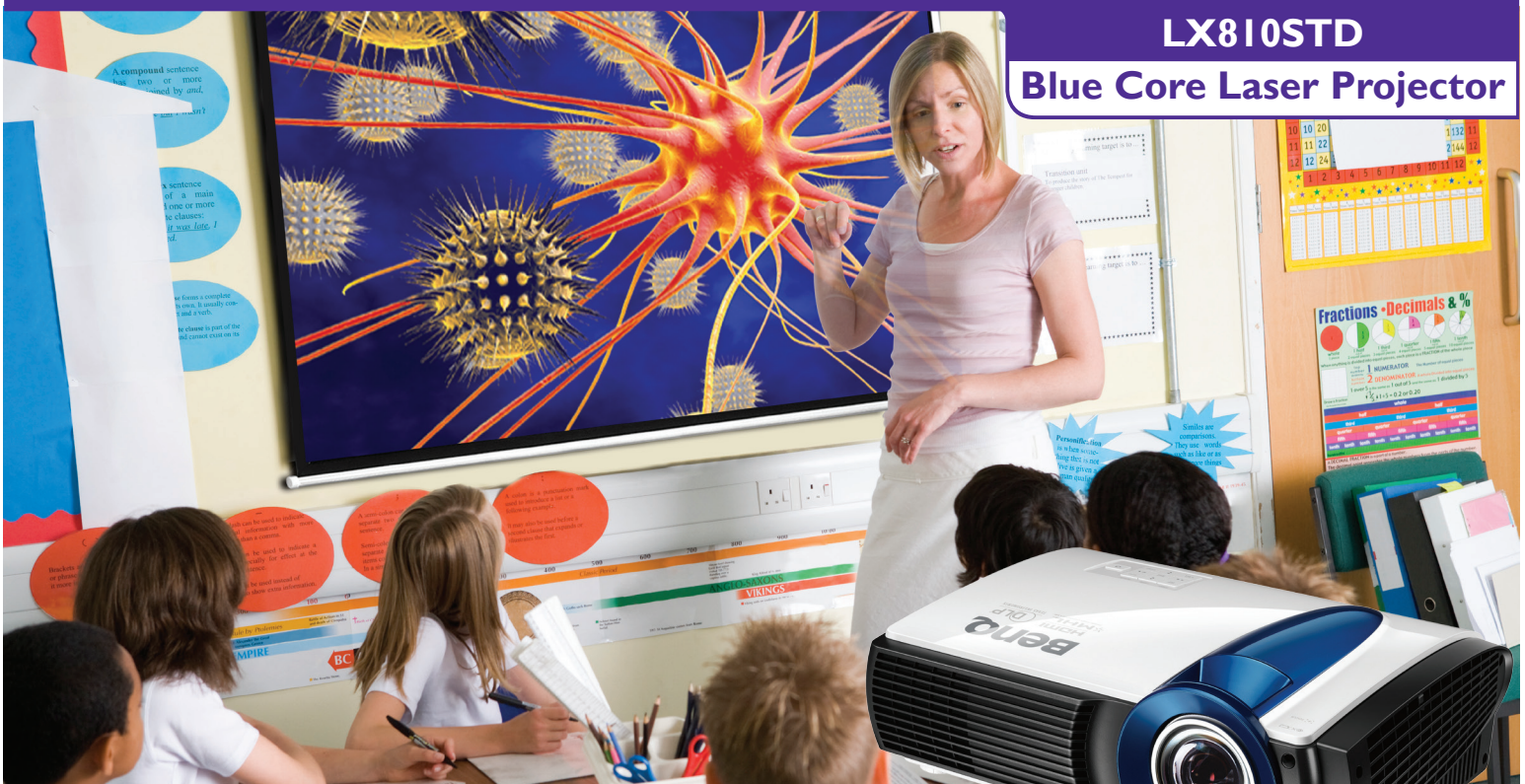


LX810STD Blue Core Laser Projector



The BenQ LX810STD is an innovative laser projector which offers outstanding image quality, unbeatable reliability and installation flexibility. Configured for use in a wide range of applications, the LX810STD can easily be deployed. Installation is simplified by a variety of features including short throw capability, dual HDMI and RS232 capability. The LX810STD features BenQ's innovative Blue Core laser technology which provides over 25,000 hours of maintenance free projection.

Blue Core Laser

Introducing the Blue core laser from BenQ, an innovative and proprietary technology designed to deliver excellent image quality across a variety of venues. Powered by Digital light processing (DLP®) technology, the Blue Core laser incorporates cutting edge technology including a dual color wheel, hermetically sealed chip and TIR prism to deliver great brightness and an exceptional resolution.

Enduring Reliability

BenQ's Blue Core laser technology delivers exceptional reliability in even the most demanding applications. Laser technology eliminates the need for lamp replacement, one of the most costly and time intensive aspects of projector maintenance. Additionally, the LX810STD is configured for continuous 24/7 operation, making it ideal for school and museum applications. An operating life of 20,000 hours ensures the total cost of ownership (TCO) is industry leading.

Installation Flexibility

Installing a professional projector can be a demanding task, but the LX810STD is equipped with a variety of features to simplify things and deliver added flexibility. The projector can be mounted at any angle allowing for impactful visual communication including portrait projecting and projecting onto ceilings and floors. Dual 10 watt speakers deliver impactful sound and create an immersive experience. A comprehensive interface including 2 HDMI portals, 2 D – sub-in portals and RS232 increase installation convenience. Multiple Display administration (MDA) software allows multiple projectors to be controlled from one place, such as an I.T. control room.

Interactive Capability

Effective collaboration is essential in today's classroom. The interactivity provided by the BenQ LX810STD is an excellent complement to any classroom, allowing students to write and annotate on images. Content becomes more engaging and lessons more memorable.

Key Features

- XGA Resolution (1024 x 768)
- 3000 ANSI Lumens
- 100,000:1 Contrast ratio
- Short Throw performance (0.61)
- Digital Light Processing (DLP)

Secondary Features

- 360 any Angle projection including portrait
- 1.5A USB power supply
- 2 x 10w speakers
- SmartEco power saving technology
- Comprehensive interface – HDMI x 2, RS232 and USB Mini

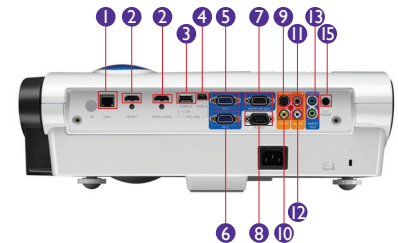
LX810STD

Laser Projector

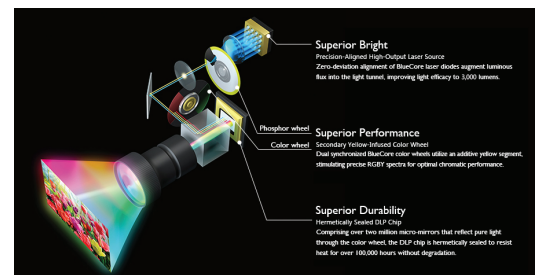
| SPECIFICATIONS | | |
|-----------------------------|---|--|
| Projection System | DLP | |
| Native Resolution | XGA (1024 x 768) | |
| Brightness | 3000 ANSI lumens | |
| Contrast Ratio | 100,000:1* | |
| Display Color | 1.07 Billion | |
| Lens | F=2.6, f=6.9mm | |
| Aspect Ratio | Native 4:3 (5 aspect ratio selectable) | |
| Throw Ratio | 0.61 (78"±3% @ 0.96m) | |
| Image Size (Diagonal) | 60" ~ 120" | |
| Zoom Ratio | Fixed | |
| Light Source | Laser Light Source | |
| Light Source Life | 20,000/25,000 hours(Normal/Eco)** | |
| Keystone Adjustment | 1D, Vertical +/- 40 degrees | |
| Projection Offset | 115% ± 2.5% | |
| Resolution Support | VGA(640 x 480) to WUXGA_RB(1920 x 1200) * RB= Reduced blanking | |
| Horizontal Frequency | 15k~102KHz | |
| Vertical Scan Rate | 23-120Hz | |
| Compatibility | HDTV Compatibility | 480i, 480p, 576i, 576p, 720p, 1080i, 1080p |
| | Video Compatibility | NTSC, PAL, SECAM |
| Interface | Computer in (D-sub 15pin) | x 2 (shared with Component) |
| | Monitor out (D-sub 15pin) | x 1 |
| | Composite Video in (RCA) | x 1 |
| | S-Video in (Mini DIN 4pin) | x 1 |
| | HDMI (1.4a) | x 2 |
| | Audio in (Mini Jack) | x 1 |
| | Audio L/R in (RCA) | x 1 |
| | Audio out (Mini Jack) | x 1 |
| | Speaker | 10W x 2 |
| | LAN (RJ45) | x 1 (LAN Control) |
| | USB (Type A) | x 1 (5V/1.5A power supply) |
| | USB (Type mini B) | x 1 |
| | DC 12V Trigger (3.5mm Jack) | x 1 |
| | RS232 (DB-9pin) | x 1 |
| | Dimensions | Dimensions(W x H x D) |
| Weight | | 5.6kg (Projector Only) |
| Power | Power Supply | AC100~240V, 3.3 A, 50~60 Hz |
| | Power Consumption | 305W(Max), Standby<0.5W |
| Audible Noise(Normal/Eco) | 39dB/36dB (with dust filter) | |
| On-Screen Display Languages | Arabic/ Bulgarian/ Croatian/ Czech/ Danish/ Dutch/ English/ Finnish/ French/ German/ Greek/ Hindi/ Hungarian/ Italian/ Indonesian/ Japanese/ Korean/ Norwegian/ Polish/ Portuguese/ Romanian/ Russian/ Simplified Chinese/Spanish/ Swedish/ Turkish/ Thai/ Traditional Chinese (28 Languages) | |
| Picture Modes | Bright/Presentation/sRGB/Cinema/User 1/User 2 | |
| Accessories | Standard | Optional |
| | Remote Control w/ Battery | Universal Wall Mount (T/R 0.6) |
| | Power Cord (by region) | PointWrite PW02 |
| | User Manual CD | FingerTouch PT12 |
| | Quick Start Guide | |
| | Warranty Card (by region) | |
| | VGA(D-sub 15pin) Cable | |
| | Dust filter (Assembled) | |



INPUT / OUTPUT TERMINALS



- 1 LAN Port (RJ45 for Network control)
- 2 HDMI I (1.49)
- 3 HDMI II (MHL)
- 4 USB TypeA (1.5A power)
- 5 USB Mini-B (Service)
- 6 Computer In-I (D-sub)
- 7 Monitor Out (D-sub 15pin, Female)
- 8 RS232 In (D-sub 9pin, male)
- 9 S-Video In (Mini DIN 4pin)
- 10 Composite Video In (RCS)
- 11 Audeo R (RCA)
- 12 Audio L (RCA)
- 13 Audio In/Out (Mini Jack)
- 14 12v Trigger



**FOFO condition

**Light source life results will vary depending on environmental conditions and usage. Actual product's features and specifications are subject to change without notice."

BenQ America Corp.
www.BenQ.us

BenQ is a registered trademark of BenQ Corp. All rights reserved. Product names, logos, brands, and other trademarks featured or referred to in this material are the property of their respective trademark holders. Specifications subject to change without notice. 8/30/2017



Because it matters